





Contents

An authentic journey	4-7
A noble and high-performance material	8-9
A combination of craftsmanship and technology	10-15
Unique and tailor-made	
Bicycles with a low carbon footprint	16-17
	18-19



ZAFI

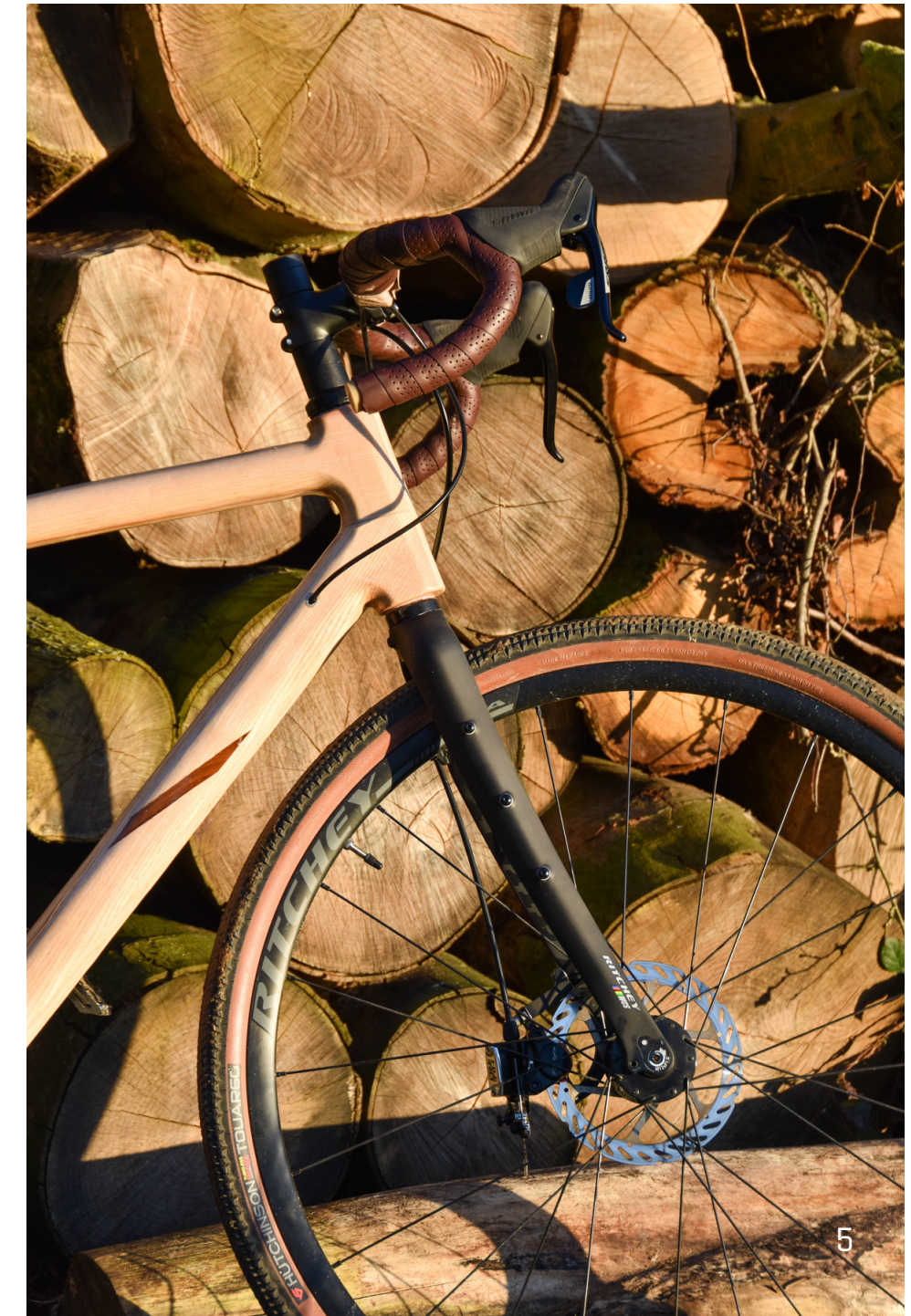
ZAFI CYCLES is the first Belgian-based company to offer custom-made wooden bicycle frames.

By absorbing vibrations, wood offers a smooth, comfortable ride incomparable to that of a traditional steel, aluminium or carbon bicycle.

For each ZAFI, the choice of wood is carefully considered, making each bike unique, adapted and tailor-made.

This noble material gives each bike a soul and a story. All our wood is locally sourced from cooperatives that manage our forests sustainable way.

Therefore, a ZAFI bike is not just a high-performance, comfortable bike, it's also an experience and a unique product.



Our values

A human company constantly striving for progress. ZAFI CYCLES offers a product and a way of thinking that both promote innovation, excellence, transparency and sustainability.



Zafimaniry

ZAFI refers to a Madagascan tribe, Zafimaniry, who are the last remaining guardians of traditional woodworking techniques that were once common throughout the island. Today, the Zafimaniry are in danger as deforestation threatens their main source of income: the sale of statuettes and other decorative wooden objects.

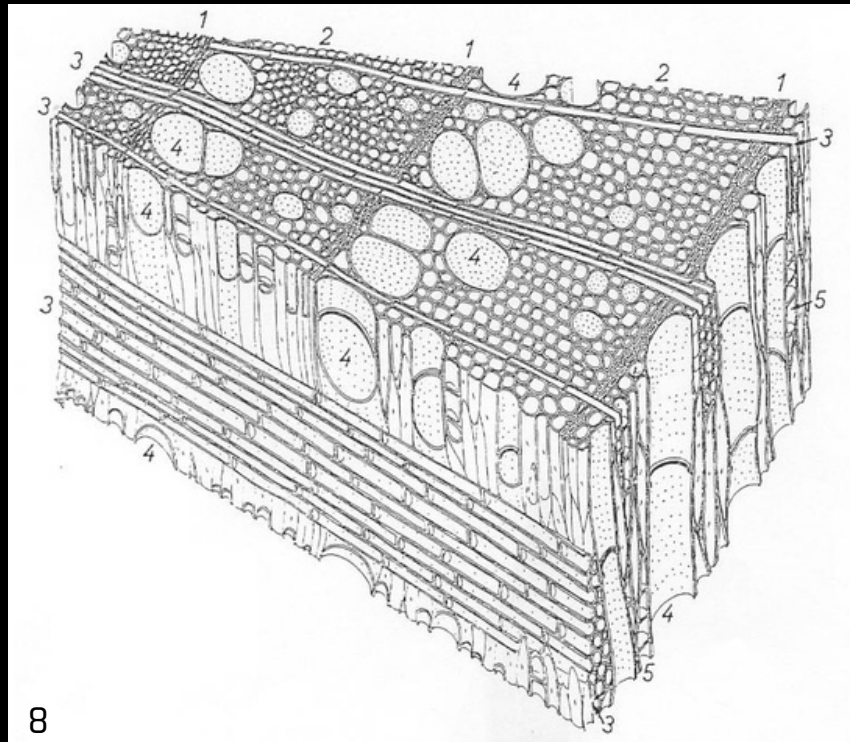
Registered on the Representative List of the Intangible Cultural Heritage of Humanity in 2008, some 25,000 Zafimaniry live in around a hundred villages and hamlets dispersed across the mountains of the region.

A noble and high-performance material

If we opted for wood, it was above all a question of comfort. With conventional steel, aluminium or carbon frames, vibrations are transmitted through the frame to the rider, whereas wood absorbs them almost entirely. The cellular structure of wood acts like a chain of shock-absorbing springs while remaining rigid, ensuring unbeatable comfort when riding.

With a higher strength-to-weight ratio than steel, wood can be used to create lightweight bikes that meet the ISO4210-6 standard. This standard simulates 10 years of life (3 fatigue tests and 2 impact tests) and ensures "the resistance and durability of the various components and of the bicycle as a whole". It demands high standards of quality at all levels, and takes safety aspects into account from the earliest design phase.

In addition to its interesting technical properties, wood's pure, natural and warm style gives the bike a charm and design that no other material can offer. Each bike has a soul, is unique and has its own story. ZAFI's control over the entire manufacturing process give us total freedom to make custom frames.



A combination of craftsmanship and technology

Preparing the raw material

It all starts at the sawmill, where we select the logs. The two most frequently used species are ash and walnut. Our ash comes from the Sonian Wood Coop, a cooperative whose mission is to relocate the processing of wood from the Sonian Forest. They work with various partners to organise the production of this high-quality local wood. The walnut comes from a family sawmill near Florennes.

The wood is then naturally dried for several months in the workshop.



From the planks to the frame

Raw material is prepared, we can now start working on the frame. The planks are assembled in triangles, respecting the fiber direction. The frames are then cut using a digital milling machine.

The frames are hollowed out to accommodate cables and produce a lightweight frame. Once the bike is assembled, we place it on the aligner. This tool ensures perfect alignment between the front and back wheels.





The final touch

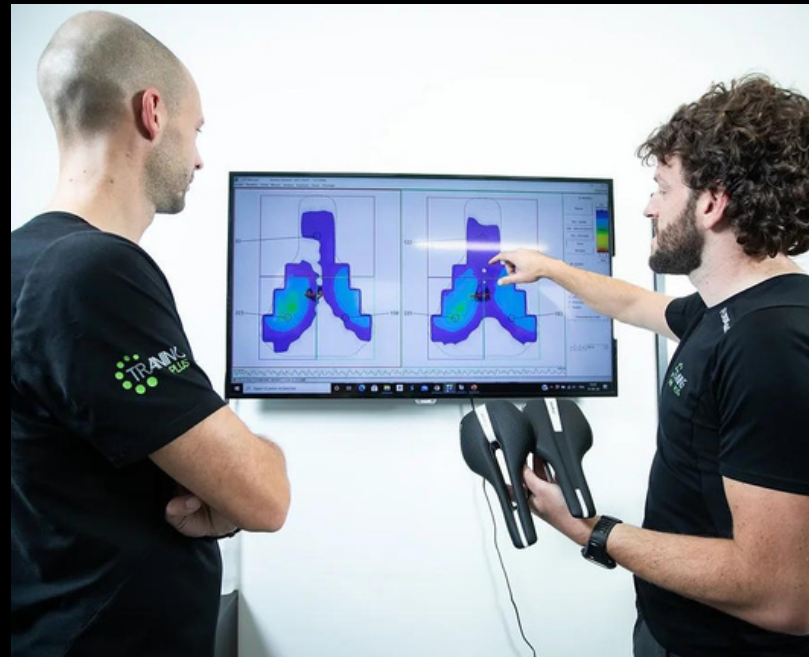


The frame is now assembled and the finishing process starts. The varnish coat will protect the frame from harsh outdoor conditions . The bike frame is now ready to be assembled with its components and to deliver sensations that the rider had never experienced before.

Unique and custom-made

More than an out-of-the-ordinary bike, our team accompanies you throughout your project to ensure that it is exclusive and adapted to your expectations and needs.

Postural analysis, combining cutting-edge technology and professional advice, enables us to design a custom-made frame and choose the most appropriate components together.



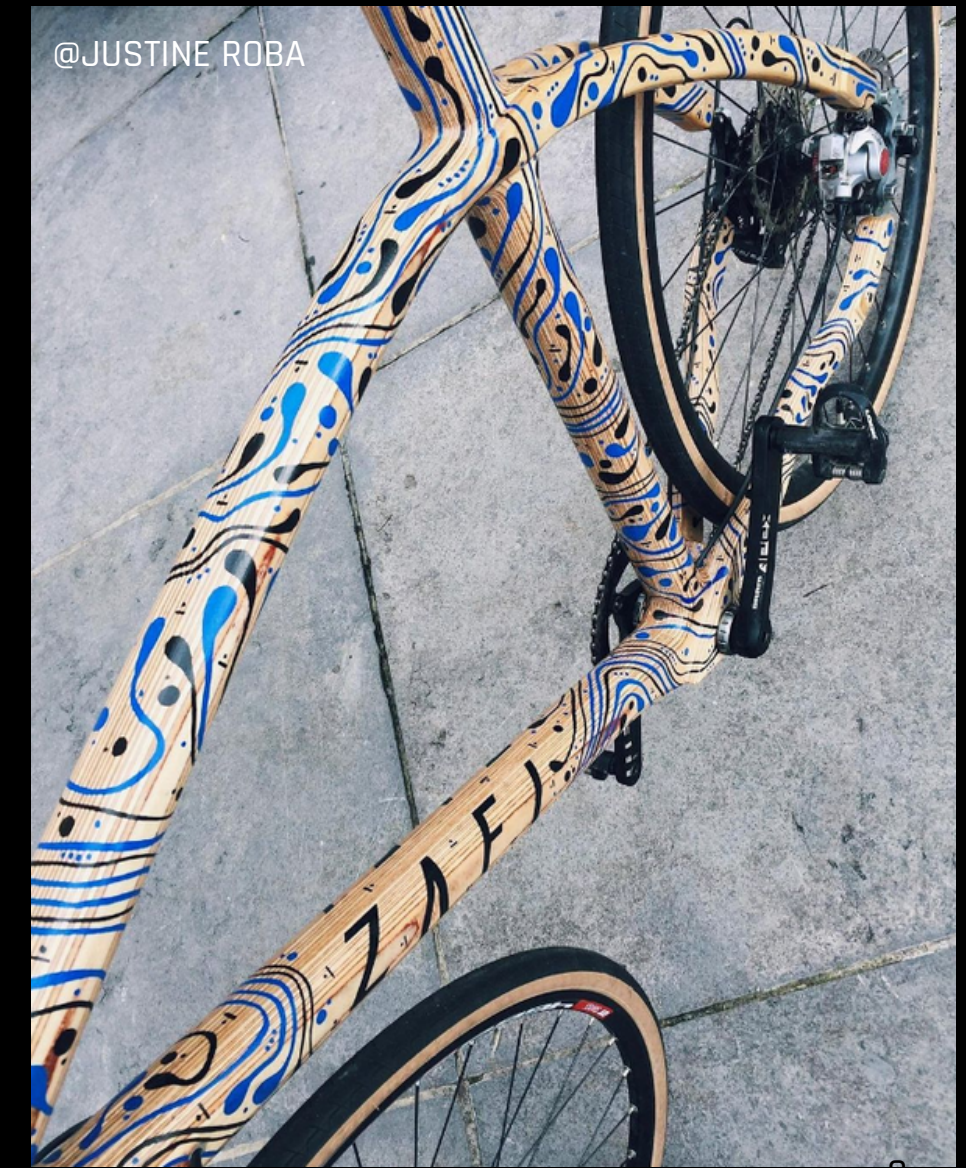
The aim is to build the ideal project, taking into account your expectations in terms of performance, comfort and injury prevention, whatever your level.

Each bike is unique. Not only because of the nature of the material used, but also because of the countless possibilities offered by wood: choice of wood type, personalised inserts, frame design, etc.



Wood offers infinite possibilities for innovation and customisation. For example, together we can create frames from wine barrels or from a specific tree that means a lot to you.

We work with artists whose imaginations run wild, putting art at the service of performance.



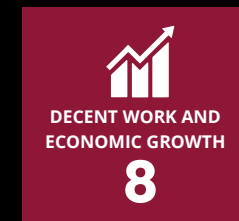


For people looking for a high-performance and a aesthetically pleasing bike, Zafi is the only sustainable and environmentally-friendly wooden bike brand in Belgium.

These are the Sustainable Development Goals we are currently working towards. Ultimately, we want to have a positive impact on all the SDGs.



GOOD HEALTH AND WELL-BEING
3



DECENT WORK AND ECONOMIC GROWTH
8



INDUSTRY, INNOVATION AND INFRASTRUCTURE
9



RESPONSIBLE CONSUMPTION AND PRODUCTION
12



CLIMATE ACTION
13



LIFE ON LAND
15



PARTNERSHIPS FOR THE GOALS
17

ZNFV

FROM ROOTS TO ROADS